

Plough Lane Wimbledon, SW19 8HA

£925,000 Freehold



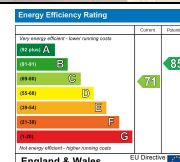
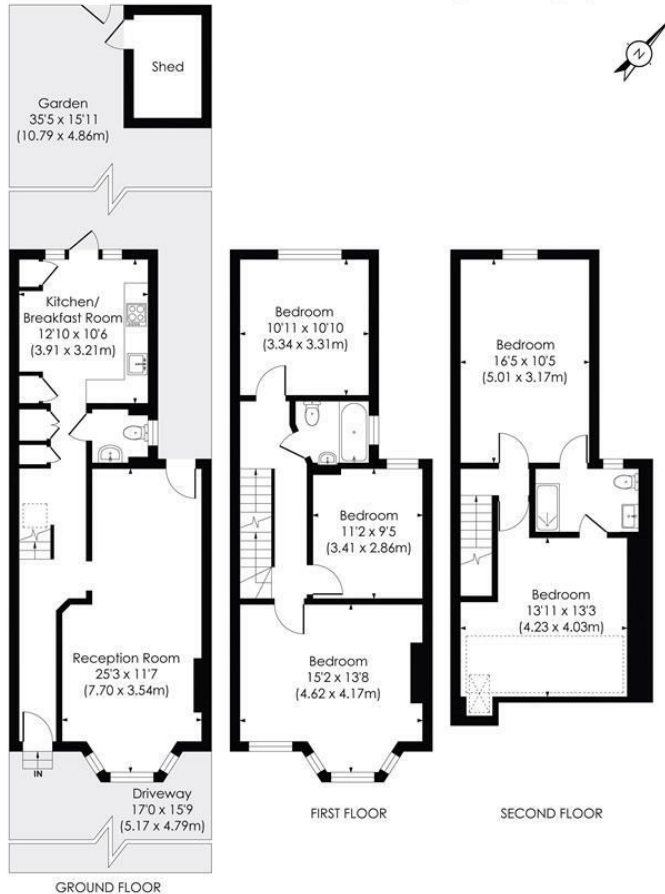
A beautifully presented five double bedroom, two bathroom Victorian terraced family home with off-street parking, offering a balance of external period charm and a bespoke contemporary finish throughout.

Ideally situated close to Wimbledon Town Centre and Mainline Wimbledon, Thameslink and Northern Line stations as well as excellent local schools and parks close by.

Comprising a superb ground floor layout, with a high specification integrated kitchen with doors opening onto the rear garden. A double-length, open-plan lounge with a feature fireplace provides a versatile living space. Upstairs, the first floor offers three double bedrooms, a luxury family bathroom. The loft conversion features two additional bedrooms and a modern shower room. Extending over 1,500 sq ft and offered to the market with no onward chain, this is a brilliant family home and an early viewing is therefore recommended.

PLOUGH LANE, SW19

Approx. Gross Internal Floor Area
1547 Sq. ft/143.71 Sq. m (Incl. RHH)
1488 Sq. ft/138.20 Sq. m (Excl. RHH)



This floor plan has been prepared for the purpose of illustration only in accordance with the latest RICS code of measuring practice and is not to scale. All measurements and areas are approximate and whilst every effort has been made to ensure the accuracy of the plan contained here, no responsibility is taken for any error, omission or misstatement.

- Victorian Terraced House
- Five Bedrooms
- Two Bathroom & Ground Floor W/C
- Off-Street Parking
- Superb Finish Throughout
- Walking Distance to Numerous Transport Links
- Double Length Reception Room
- Freehold
- No Onward Chain
- EPC Rating - C, Merton Council Tax Band - E

For Free Mortgage Quote and Best Mortgage Rates, call an Ellisons Mortgage Advisor on 020 8944 9494



Although these particulars are believed to be correct, their accuracy is not guaranteed and they do not form part of any contract.

Celebrating 30 years of successful Sales and Lettings in Merton

